

## Sunshine



# 2020

# COMMUNITY NEWSLETTER

**WE HAVE the PERFECT HOMES for SALE, Make SUNSHINE VILLAGE Your Home.**



**MH 27: Nobility**  
This Single Wide Charmer has More Room than you can imagine! 2-bed / 2-bath, Full Porch, Stainless Appliances, Carport, Screen Room, Storage and more

**\$89,900**



**MH 25: Nobility**  
Double Wide Home 2-bedroom/2-bath, Stainless Appliances Private Rear Porch Carport & More

**\$99,900**



**MH 26: Nobility**  
Double Wide Home 2-bedroom/2-bath, Full Front Porch, Stainless Appliances Open Dining/Living areas. Carport,

Screen room, Storage, and Much More.

**\$109,900**

SOON to be OPEN for VIEWING: Three additional Double Wide Homes from Champion. (Lots 3, 4, & 5)

We also have Used Homes & RV's for Sale. To Schedule an appointment to tour these or any of our homes for sale, please contact: Office 352-793-8626 or Lori Hoag, 607-621-8988

## SUPER BOWL SUNDAY PARTY

**Crazy 02/02/2020**



VS



Party Starts at 6:00 pm, Kick off 6:30

DOOR PRIZES, 50/50 DRAWING, FUN

Please bring a hardy snack to share and your own "adult beverages". Iced tea, Lemonade, and Coffee Provided. Bring a friend or two, EVERYONE is welcome.

## DON'T MISS THESE SHOWS



### TICKETS ON SALE NOW

Available at Community Hall & at Office  
**JUST \$7 PER PERSON, PER SHOW**  
**ALL Profits go Directly into the NEW CHAIR FUND & Will Get Matched**  
**Tuesday, February 11<sup>th</sup> @ 6:30**

### AN EVENING OF MAGIC

With John Russell

**Friday, February 14<sup>th</sup> @ 7:00**

**Dave "ELVIS" Adkins**

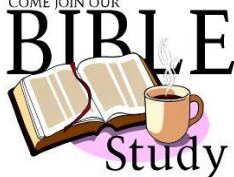
and "Cadillac-Ken"

Gospel-Classic Country

Elvis Tribute Show

Bring Your "Beverage", and Snacks.  
Dancing IS Allowed. **NOT** just for Couples...Everyone is welcome.

COME JOIN OUR



Beginning February 5<sup>th</sup> WEDNESDAYS

**MEN'S STUDY CLASS: 8:30-9:30 am**

**LADIE'S STUDY CLASS: 9:30- 10:30 am**

Non-denominational studies @ The Hall  
Hosted by Jerry & Sherri Freeman



Hosted by:  
Herb & Mary

**WEDNESDAYS 1:00-3:00 pm**

Everyone is Welcome to Come Join in or Sit and Listen.

Please, **NO PARKING in the FRONT 3 Spaces at the Hall Between 11:00 am-3:30 pm.**

## CAKE & PIE AUCTION FUNDRAISER

Proceeds for the New Chair Fund



**TUESDAY, FEBRUARY 18<sup>TH</sup> @ 5:00**

We Will Start Evening with a Potluck Dinner at 5:00 pm. Followed **IMMEDIATELY** by the **BAKED GOODS AUCTION.**

Please Bring a Generous Dish to Pass and Your own Tableware & Drink.

If you are willing to make a Baked Good for the Fundraiser, Please Sign Up with what you are making so we will know how many items we will have to "AUCTION OFF".

EVERYONE is Welcome & Encouraged to Join us.

**ALL MONEY GOES TOWARDS OUR NEW CHAIR FUND & WILL BE MATCHED BY SUNSHINE VILLAGE.**



February in Florida, Means **STRAWBERRY SHORTCAKE!**

**Tuesday, February 4<sup>th</sup> @ 6:00 pm**

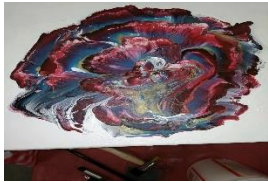
Come Enjoy a BIG Strawberry Shortcake for \$4.00 @ the Hall.

We build them with a biscuit bottom, and a scoop or two of vanilla ice cream, put a biscuit lid on it, cover it with delicious Strawberries and spray it down with whipped cream. YUM, YUM, YUM....

We will begin serving at 6:00 pm and end at 7:00 pm, so don't be late for this one!!

Servers needed. Please let Lori or Cheryl know if you can help.

**FEBRUARY CRAFT SCHEDULE**



**Tuesday, February 4<sup>th</sup> @ 10:00 am**  
**POUR PAINTING w/ Cheryl S.**

Please Sign up, Cost is \$12 and Covers ALL Materials.



**Monday, February 10<sup>th</sup> @ 10:00 am**  
**SEASHELL VASES w/ Karen N.**

Please Sign up & bring a tray for shells  
 Cost is \$12 and Covers ALL Materials



**Sunday, February 16<sup>th</sup> @ 2:00 pm**  
**SEASHELL PICTURES w/ Karen N.**

Please Sign up, Cost is \$12 and Covers ALL Materials. (Other items available at additional fee.)



**Saturday, February 22<sup>nd</sup> @ 1:00 pm**  
**WINE & PAINTING w/Cheryl S.**

(Cherry Blossoms, similar to this)  
 You DO NOT have to have any Painting Experience to enjoy this.  
 EVERYONE is welcome, yes, men too.  
 Please Sign up, Cost is \$12 and Covers ALL Materials. BYOB if you have a favorite.

**Reminder:** ALL crafts completed during our Craft Sessions will be displayed for voting at the 2<sup>nd</sup> Annual Art Show held on Wednesday, March 18<sup>th</sup>, 2020. Prize money will be awarded in each class. Additionally, you may display and sell your other craft items you have made on your own as well. Mark the date on your calendar.

**If you would like to host a craft, please contact Lori or Cheryl to get on the schedule as it fills up quickly.**

**MONTHLY COMMUNITY MEETING and FREE BREAKFAST & 50/50 Drawing for Chair Fund**



**THURSDAY, FEBRUARY 6<sup>TH</sup> @ 9:00**

Please join us for our Monthly Community Activities Meeting and Free Breakfast. This is YOUR chance to have your ideas for activities to be heard. You will be presented with the Activities Department Financial Report, upcoming activities and events, and enjoy a FREE Breakfast. **EVERYONE IS WELCOME!!**  
**Please Sign-up at Hall**

**PICKLEBALL COURT NOW OPEN**



**FREE INSTRUCTIONS & DEMO**

**TUESDAY, FEBRUARY 11<sup>TH</sup> @ 2:00**

Come Learn How to Play This New & Popular Sport. Nancy Reynolds and Friends will be coming to show us how to play Pickleball. Nancy will cover the Rules, Score Keeping & Safety Precautions, followed by a live game demonstration for us. Tell your friends.

**A GUY'S DAY OUT!!**  
**(Gal's Welcome Too)**



**THURSDAY, FEBRUARY 13<sup>TH</sup>**

**13<sup>TH</sup> Annual Paquette's Tractor Pull and Show**

**Gates Open at 8:00 am \$20 Entry Fee**  
**Includes: Museum Entrance, Antique Truck Club of America Show, & Tractor Show. Sign-up to Carpool.**  
 615 S Whitney Road Leesburg, FL



**SUNDAY, FEBRUARY 16<sup>TH</sup> @ 5:00 pm**

**Come out and Enjoy FREE Cake & Ice Cream as We CELEBRATE all our FEBRUARY Birthdays and Anniversaries.**

You do NOT have to have a February Birthday or Anniversary to Join the Fun. Come help those that do, Celebrate their special days.

**MONDAY, FEBRUARY 17<sup>TH</sup> @ 7:00 pm**



**POPCORN & LEMONADE "GOOD BOYS"**

**CARD BINGO SUNDAY NIGHTS**



Join the Fun Every Sunday Night @ 6:00 for CARD BINGO. All you need to bring is One Deck of Standard Playing Cards 10- Dimes and 1- Quarter. EASY to Learn, FUN to Play. (No Game February 2<sup>nd</sup>)



**WORK it OUT w/Cheryl W.**

**TUESDAYS & THURSDAYS @ 8:30 am**

Join Cheryl W. for some low impact stretches and aerobic exercises. Everyone is welcome to come WORK IT OUT!



**FACIAL COLOR MAKEOVERS**

**Saturday, February 8<sup>th</sup> @ 1:00 pm**

**Sign up for Dale's FREE Class**

Come join the ladies for an afternoon of FUN and Glamour. Learn what colors are right for YOU. EVERYONE is WELCOME



Please don't throw your butts on the ground, not even your own lot. Thank you!



**BAKED POTATO BAR is BACK!!**



**THIS is  
HUGE**

**Saturday, February 8<sup>th</sup> @ 5:00**

**GIANT Baked Potato  
with OVER a DOZEN TOPPINGS  
Just \$5.00 Per Person**

Please Sign-up (We DON'T Want to Run Out of ANYTHING)

Please Remember to Bring Your Own Table Settings and Drink. (Coffee & Ice Water Provided)



**FRIDAY  
CORNHOLE  
LEAGUE NOW  
STARTING  
2:00 pm weekly**

**SUNSHINE VILLAGE RESORT vs**

**Webster Travel Resort**

Alternating Fridays Between both Resorts. EVERYONE is WELCOME this is All in FUN. Beginners to Expert, teams will be Drawn by Number. Bring a snack and beverage.

**Feb. 7<sup>th</sup>: Webster Travel Resort**

**Feb. 14<sup>th</sup>: SUNSHINE VILLAGE**

**Feb. 21<sup>st</sup>: Webster Travel Resort**

**Feb. 28<sup>th</sup>: SUNSHINE VILLAGE**

**(Practice Thurs. 2 pm @ Bob's Corner)**



**THRIFT  
SHOPPING  
& LUNCH**

**TUESDAY, FEBRUARY 25<sup>TH</sup> @ 9:00**

Join us for a FUN FILLED day of Thrifting and Lunch. Karen N. is once again putting together a GREAT outing. Everyone is Welcome to Come, the More, the Merrier. Please sign up @ Hall and let us know if you are willing to drive.



**WAIST MANAGEMENT  
CLASSES**

**Mondays @ 9:00**

Fun & Support in managing your waistline. Learn what

the "no-no" food of the week is. Share healthy recipes and support each other. PRIVATE Weigh Ins each Monday morning. 60 cents a month to give back as "fun" incentives. EVERYONE is WELCOME (Men & Women).

**For Your Active Lifestyle**

**Go to Sunset Park & PLAY!!**



**Try it Out!!**

**Horseshoes, Cornhole, Kan Jam, Bocce, Pickleball or a Bonfire. It's all here for your ENJOYMENT.**

**Pickleball Equipment will be available to Borrow with a \$20 Refundable Deposit.**



**SUNSHINE SNACK BAR IS OPEN**

**(Located Inside Sunrise Hall)**

**Wednesday & Thursday 4:30-6:00 pm**

**Friday 5:00-6:00 pm**

**ALWAYS AVAILABLE:** Hotdogs, Burgers, Cheeseburgers, Grilled Cheese Sandwich, Chips, Ice Cream Novelties, Soda, Water, and Coffee.

**PLUS: Daily Specials till gone.**

Weekly Menus are posted in the Hall and in the Bulletin Boards.

If you can volunteer to work a shift or two in the Snack Bar, we sure would appreciate it. You receive a FREE MEAL for volunteering.

**February Specials:**

**2/5: Pot Roast \$6**

**2/6: Pulled Pork Sandwich w/slaw or Baked beans \$5**

**2/7: Pulled Pork Sandwich, slaw, beans, Dessert & Drink \$9**

**2/12: MEXICAN MIX SAMPLER \$6 (Hard or Soft Taco, Chicken or Cheese Quesadilla, Yellow Rice & Refried Beans)**

**2/13: 2-Slices Pizza, Salad \$5 (Poolside)**

**2/14: NO DINNER (Elvis Show)**

**2/19: Egg or Tuna Salad, Chips & Pickle \$4.00**

**2/20: TOUR of ITALY SAMPLER \$7**

**(Spaghetti w/ Lg. meatball, Stuffed Shell, & Lasagna served w/Salad & Bread)**

**2/21: Roast Turkey Dinner \$9**

**2/26: Stuffed Green Pepper Soup \$5**

**2/27: Turkey & Gravy Over Rice and a Side Veggie \$5**

**2/28: Boiled Ham & Cabbage Dinner \$9**

**Sunshine Hall is Looking for Donations of the Following:**

Your Unwanted Corelle Cereal Bowls, Any Silverware (not disposable), Dinner Plates and Storage Containers THANK YOU! We Want to Go GREEN....



We know you LOVE Bingo, so do WE.

Thursday Nights have gotten CRAZY BUSY. We will be installing another monitor so our seating capacity will accommodate you much better. Until then we ask just a few things:

**NO EARLY SEAT RESERVING**

**Snack Bar** operates until 6:00 and we will continue to Reserve two tables for those eating at the Snack Bar.

**PLEASE, DO NOT** move the tables and fill up all the chairs.

**Bingo Card Sales** do not open until 6:00 & Games Begin at 6:30, please do not arrive for Bingo before 5:30. We **WILL** have seats for everyone with a lot less confusion.

Thank you for your cooperation

*From the Office:* With so many visitors this season at Sunshine Village Resort, we just wanted to pass on some reminders to make EVERYONES stay more enjoyable.

If you have ANY questions, comments, or even a complaint, we want to hear it. Please send an email to [voice@sunshinevillageflorida.com](mailto:voice@sunshinevillageflorida.com) and your message WILL be addressed. Please **RESPECT** other's sites, do not walk your dog on, drive across, or cut across another lot for **ANY** reason. We will continue to capture strays as they have become a problem. **ALL** pets, including cats, are to be kept on a leash, and supervised all times.



**South Side  
Super Site  
Laundry Facility:  
OPERATING the  
NEW  
MACHINES...**

Commercial Laundry Company has instructed us that if the kiosk card is pulled away too quickly from the readers, the machine will display an **ERROR MESSAGE**. If this happens, please unplug the machine and plug it back in and that will reset it. To help avoid this from happening, please keep the card in the card reader slot until the reader light **FLASHES**.